

SURFACE

The List



Achille Salvagni Atelier



ACHILLE SALVAGNI ATELIER



<https://www.achillesalvagni.com/>

+44(0)2074090026 enquiries@achillesalvagni.com

📍 Location

Salvagni founded Achille Salvagni Atelier, a studio devoted to the production of his limited-edition furniture and lighting. Though an avowed modernist, Salvagni's work consistently bears the weight of history – not in overt references, but in his material richness, impeccable craftsmanship, and deeply layered narrative, resulting in work that is both philosophical and romantic. Growing up in Rome, he was greatly influenced by Italy's rich history and design heritage, which can be seen in everything Salvagni designs.

Surface Says

“One of the most versatile designers working today, Achille Salvagni wields a passion for quality and craftsmanship that takes the lead in every project, from sumptuous apartments in Rome and an eponymous line of clean-lined furniture to his award-winning yacht interiors.”



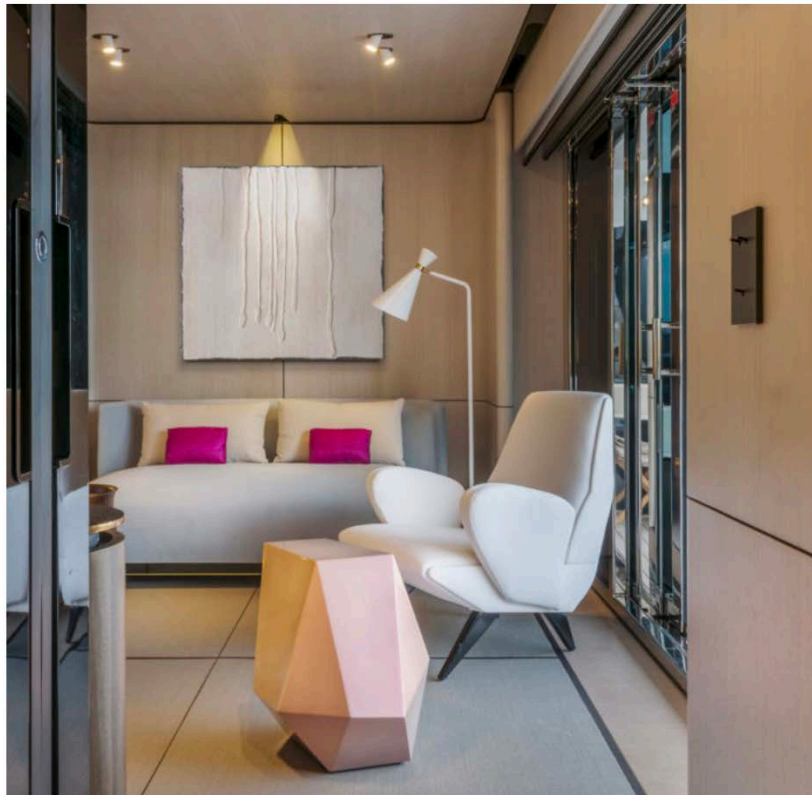
London Interior

Inspired by the unique topography and cultures of the African Sahara, earthy tones pervade the space creating a glowing environment punctuated by drops of orange, amber and blue that is dominated by shapes evoking life in the desert.



Geneva Interior

This bold and playful interior is a sumptuous retro-futuristic space capsule inspired by set designs from iconic science fiction films. The minimal monochrome background is enhanced by the earthy and metallic tones of Salvagni's signature pieces, crafted from natural materials such as onyx, 24K gold-plated bronze and European walnut. Against the stark white background, organic textures and soft curves are juxtaposed with geometric forms, exploring the harmony between past and future, tradition and innovation.



Endeavour II Yacht

The Rossinavi Endeavour II yacht was designed to feel like home, no matter where in the world you are. The space is furnished with a mix of custom pieces by Achille Salvagni Atelier, a vintage chair by Nino Zoncada and Art by Lucio Fontana.



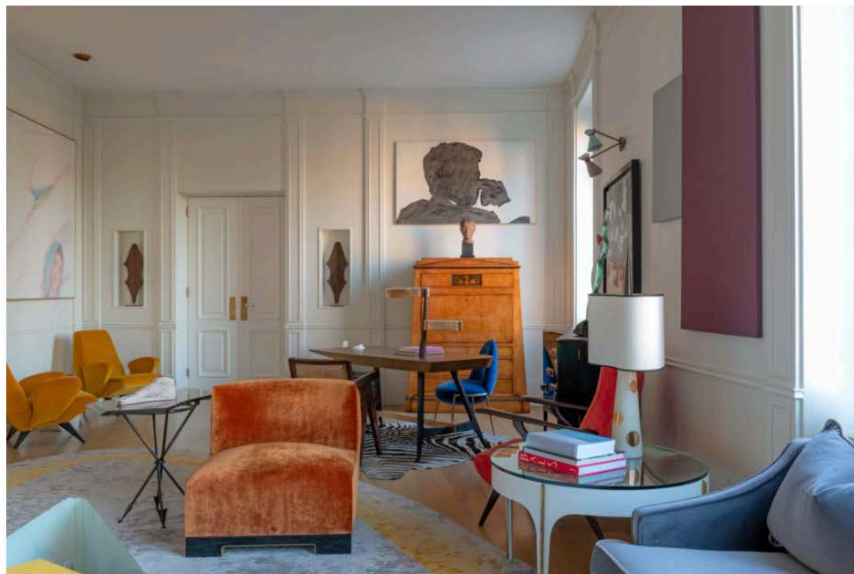
Achille Salvani Atelier

Salvagni's new London Atelier is a light-filled contemporary space with a brilliant and cohesive synergy throughout. The finishes found in the space mirror the finishes on his works. His iconic parchment and bronze finishes are shown here.



Roman Villa Borghese

A study in shapes and contrast for a modernist apartment at the Villa Borghese. With a celestial blue domed ceiling and onyx panels, Salvagni creates light and space in an interior room.



Rome Residence

In the living room of Salvagni's Rome residence, a Biedermeier cabinet sits comfortably amongst furniture designs of the architect's own creation. Fontana Arte tables and other 20th century works coexist beautifully with contemporary art including an abstracted portrait by Sergio Lombardo and a Gianni Piacentino. What ties them all together is great craftsmanship and artistry.